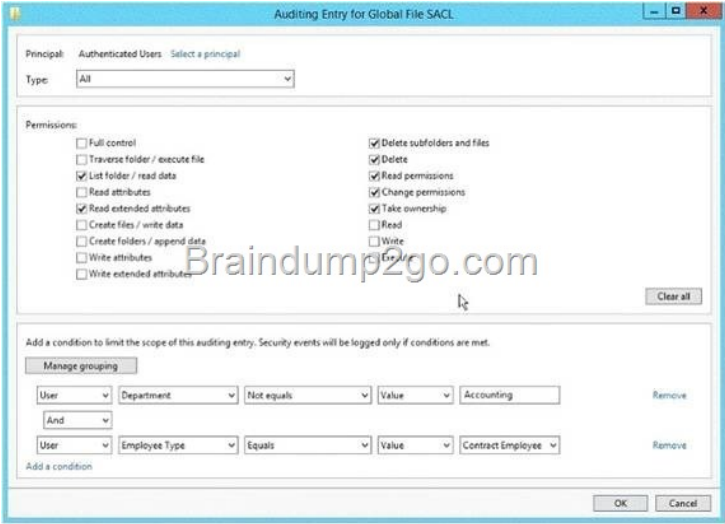


Official 2014 Latest Microsoft 70-411 Exam Dump Free Download(371-380)!

QUESTION 371 Hotspot Question Your network contains an Active Director domain named contoso.com. The domain contains a file server named Server1. All servers run Windows Server 2012 R2. You have two user accounts named User1 and User2. User1 and User2 are the members of a group named Group1. User1 has the Department value set to Accounting, user2 has the Department value set to Marketing. Both users have the Employee Type value set to Contract Employee. You create the auditing entry as shown in the exhibit. (Click the Exhibit button.)



To answer, complete each statement according to the information presented in the exhibit. Each correct selection is worth one point.

Answer Area

To ensure that an audit event is logged when User1 deletes files on Server1, you must ...

You must ... to ensure that an audit event is logged when User2 opens files on Server1.

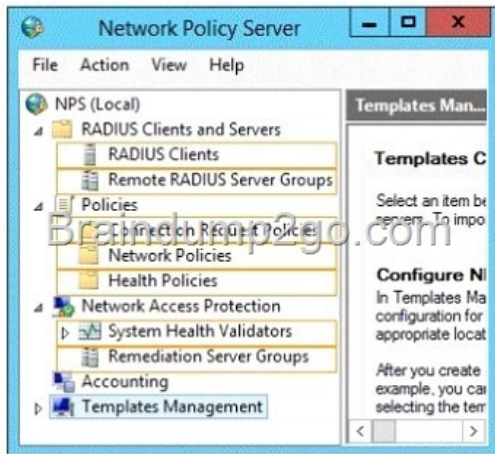
Answer:

Answer Area

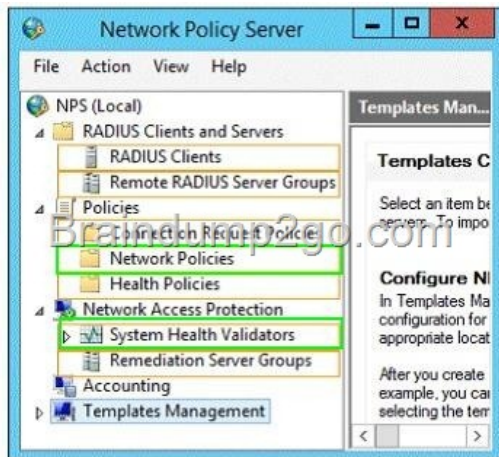
To ensure that an audit event is logged when User1 deletes files on Server1, you must ...

You must ... to ensure that an audit event is logged when User2 opens files on Server1.

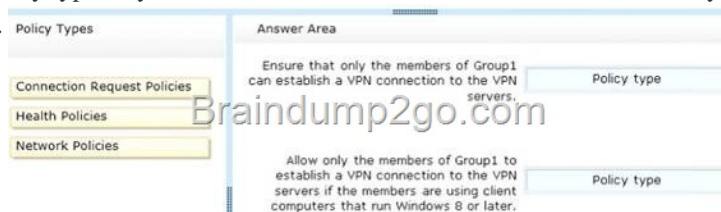
QUESTION 372 Hotspot Question You have a server named Server1 that runs Windows Server 2012 R2. You configure Network Access Protection (NAP) on Server1. Your company implements a new security policy stating that all client computers must have the latest updates installed. The company informs all employees that they have two weeks to update their computer accordingly. You need to ensure that if the client computers have automatic updating disabled, they are provided with full access to the network until a specific date and time. Which two nodes should you configure? To answer, select the appropriate two nodes in the answer area.



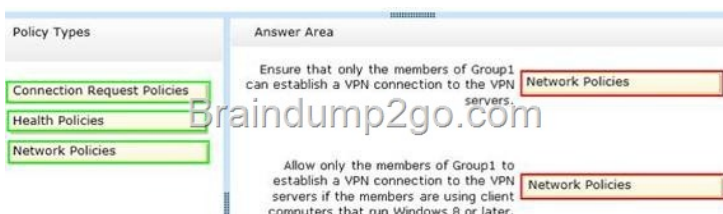
Answer:



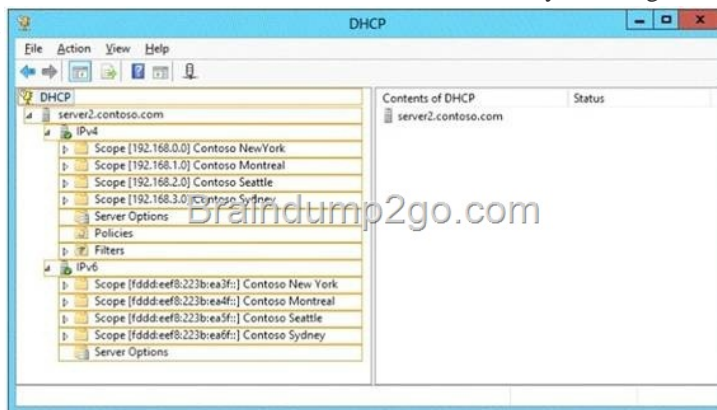
QUESTION 373 Your network contains an Active Directory domain named contoso.com. The domain contains a server named Server1 that runs Windows Server 2012 R2. Server1 has the Network Policy Server server role installed. You need to allow connections that use 802.1x. What should you create? A. A network policy that uses Microsoft Protected EAP (PEAP) authentication B. A network policy that uses EAP-MSCHAP v2 authentication C. A connection request policy that uses EAP-MSCHAP v2 authentication D. A connection request policy that uses MS-CHAP v2 authentication Answer: C QUESTION 374 Drag and Drop Question You have a server named Server1 that runs Windows Server 2012 R2. Server1 has the Network Policy and Access Services server role installed. All of the VPN servers on your network use Server1 for RADIUS authentication. You create a security group named Group1. You need to configure Network Policy and Access Services (NPAS) to meet the following requirements: - Ensure that only the members of Group1 can establish a VPN connection to the VPN servers. - Allow only the members of Group1 to establish a VPN connection to the VPN servers if the members are using client computers that run Windows 8 or later. Which type of policy should you create for each requirement? To answer, drag the appropriate policy types to the correct requirements. Each policy type may be used once, more than once, or not at all. You may need to drag the split bar between panes or scroll to view content.



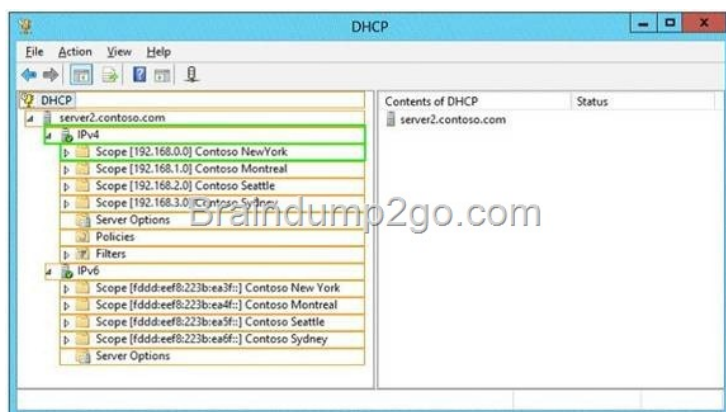
Answer:



QUESTION 375 Hotspot Question Your company has four offices. The offices are located in Montreal, Seattle, Sydney, and New York. The network contains an Active Directory domain named contoso.com. The domain contains a server named Server2 that runs Windows Server 2012 R2. Server2 has the DHCP Server server role installed. All client computers obtain their IPv4 and IPv6 addresses from DHCP. You need to ensure that Network Access Protection (NAP) enforcement for DHCP applies to all of the client computers except for the client computers in the New York office. Which two nodes should you configure? To answer, select the appropriate two nodes in the answer area.



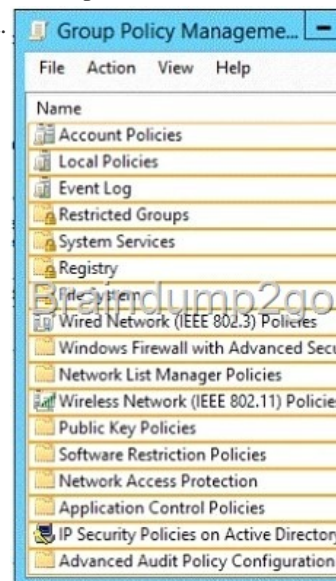
Answer:



QUESTION 376 You have a server named Server1 that runs Windows Server 2012 R2. Server1 has the Remote Access server role installed. On Server1, you create a network policy named Policy1. You need to configure Policy1 to ensure that users are added to a VLAN. Which attributes should you add to Policy1? A. Tunnel-Tag, Tunnel-Password, Tunnel-Medium-Type, and Tunnel-Preference B. Tunnel-Tag, Tunnel-Server-Auth-ID, Tunnel-Preference, and Tunnel-Pvt-Group-ID C. Tunnel-Type, Tunnel-Tag, Tunnel-Medium-Type, and Tunnel-Pvt-Group-ID D. Tunnel-Type, Tunnel-Password, Tunnel-Server-Auth-ID, and Tunnel-Pvt-Group-ID Answer: C

QUESTION 377 Your network contains an Active Directory domain named contoso.com. The domain contains a server named Server1 that runs Windows Server 2012 R2 and has the Network Policy Server role service installed. You need to enable trace logging for Network Policy Server (NPS) on Server1. Which tool should you use? A. The tracert.exe command B. The Network Policy Server console C. The Server Manager console D. The netsh.exe command Answer: D Explanation: You can use log files on servers running Network Policy Server (NPS) and NAP client computers to help troubleshoot NAP problems. Log files can provide the detailed information required for troubleshooting complex problems. You can capture detailed information in log files on servers running NPS by enabling remote access tracing. The Remote Access service does not need to be installed or running to use remote access tracing. When you enable tracing on a server running NPS, several log files are created in %windir%\tracing. The following log files contain helpful information about NAP: IASNAP.LOG: Contains detailed information about NAP processes, NPS authentication, and NPS authorization. IASSAM.LOG: Contains detailed information about user authentication and authorization. Membership in the local Administrators group, or equivalent, is the minimum required to enable tracing. Review details about using the appropriate accounts and group memberships at Local and Domain Default Groups (<http://go.microsoft.com/fwlink/?LinkId=83477>). To create tracing log files on a server running NPS Open a command line as an administrator. Type netshras set tr * en. Reproduce the scenario that you are troubleshooting. Type netshras set tr * dis. Close the command prompt window. <http://technet.microsoft.com/en-us/library/dd348461%28v=ws.10%29.aspx> **QUESTION 378** Hotspot Question Your network contains an Active Directory domain named contoso.com. All client computers are configured as DHCP

clients. You link a Group Policy object (GPO) named GPO1 to an organizational unit (OU) that contains all of the client computer accounts. You need to ensure that Network Access Protection (NAP) compliance is evaluated on all of the client computers. Which two settings should you configure in GPO1? To answer, select the appropriate two settings in the answer area.



Answer:



QUESTION 379 Your network contains a Network Policy Server (NPS) server named Server1. The network contains a server named SQL1 that has Microsoft SQL Server 2008 R2 installed. All servers run Windows Server 2012 R2. You configure NPS on Server1 to log c. You need to ensure that the accounting data is captured if SQL1 fails. The solution must minimize cost. What should you do? A. Implement Failover Clustering. B. Implement database mirroring. C. Run the Accounting Configuration Wizard. D. Modify the SQL Server Logging properties. Answer: C QUESTION 380 Your network contains an Active Directory domain named contoso.com. The domain contains domain controllers that run Windows Server 2008, Windows Server 2008 R2, Windows Server 2012, and Windows Server 2012 R2. A domain controller named DC1 runs Windows Server 2012 R2. DC1 is backed up daily. During routine maintenance, you delete a group named Group1. You need to recover Group1 and identify the names of the users who were members of Group1 prior to its deletion. You want to achieve this goal by using the minimum amount of administrative effort. What should you do first? A. Perform an authoritative restore of Group1. B. Mount the most recent Active Directory backup. C. Use the Recycle Bin to restore Group1. D. Reactivate the tombstone of Group1. Answer: A

Passing Microsoft 70-411 Exam successfully in a short time! Just using Braindump2go's Latest Microsoft 70-411 Dump:

<http://www.braindump2go.com/70-411.html>